

# IMPACT MELANOMA

Improving **M**elanoma  
Prevention, through **A**wareness,  
Care & **T**eaching

IMPACT Melanoma provides education, prevention, and support for the most serious form of skin cancer. We are a national non-profit organization dedicated to working to reduce the incidence of skin cancer, including melanoma the deadliest form. Committed to skin cancer prevention and early detection, we provide a variety of award-winning programs which aim to raise awareness and educate the public about skin cancer, as well as support services for those struggling with the disease.

## TIPS FOR STAYING SAFE IN THE SUN

- Use SPF 30 sunscreen with UVA/UVB protection
- Reapply every 2 hours
- Seek shade
- Wear a hat and sunglasses with UV protection

**IMPACT**  
MELANOMA

EDUCATION | PREVENTION | SUPPORT

ONE CONCORD FARMS | 490 VIRGINIA ROAD | CONCORD, MA 01742  
800.557.6352 | [INFO@IMPACTMELANOMA.ORG](mailto:INFO@IMPACTMELANOMA.ORG) | [IMPACTMELANOMA.ORG](http://IMPACTMELANOMA.ORG)



@IMPACTMelanoma

**IMPACT**  
MELANOMA

## IMPACT MELANOMA'S FREE PROGRAMS



**Billy's Buddies** provides one-on-one phone connections with a melanoma survivor or caregiver & monetary support for non-traditional expenses for those in financial need.



**Support Groups** are offered both in person (New England) and telephonically for patients dealing with the realities of melanoma and their caregivers. These groups are led by trained professionals skilled in working with cancer patients.



**Skinny On Skin** teaches beauty professionals how to screen for suspicious moles while performing common salon services. This program is available nationwide through an online training.



**Your Skin Is In** is an educational, pledge based program that encourages teens and young adults to make a personal promise to protect the skin they're in. An interactive eLearning lesson helps bring this important education to classrooms nationwide.



**Practice Safe Skin** educates the public on protecting their skin and provides free sunscreen in public recreation areas.

**VISIT [IMPACTMELANOMA.ORG](https://www.impactmelanoma.org) TO LEARN MORE AND TO GET INVOLVED!**

## GET THE FACTS

There are three types of skin cancer: melanoma, squamous cell carcinoma and basal cell carcinoma.

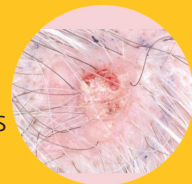
### MELANOMA

- Melanoma is the deadliest form of skin cancer.
- Nearly 9,000 people die from melanoma annually.
- Despite efforts to address risk factors, skin cancer rates, including melanoma, have continued to increase worldwide.
- Although genetic factors such as having fair skin, contributes to a persons' risk, as much as 90% of melanomas are estimated to be caused by UV exposure.
- UV exposure is the most preventable cause of skin cancer.
- If caught early, melanoma is 99% curable.



### SQUAMOUS CELL CARCINOMA (SCC)

- Uncontrolled growth of abnormal cells arising in the squamous cells, which compose most of the skin's upper layers.
- Caused by cumulative ultraviolet (UV) exposure over the course of a lifetime; to the sun's UV light, intense exposure in the summer months, and the UV produced by tanning beds all add to the damage that can lead to SCC.



### BASAL CELL CARCINOMA (BCC)

- Abnormal, uncontrolled growths that arise in the skin's basal cells.
- Although, not usually deadly, basal cell is the most common form of all.

